

School Attendance Survey

Fiona Phur

Participation and Partnerships Business Manager



Somerset Youth Forum



- Established in May 2020
- Open to any young person 10 –18 years (up to 25 SEND); representative or individual
- Meet termly (4-5 sessions) on Zoom
- Influence and challenge to the Somerset Safeguarding Children Partnership
- Current focus is on child poverty, school attendance and the voice of the child in the health service
- Opportunities to work and make resources with various agencies



What do you think makes young people attend and enjoy school?

Peers

Friends

Having a teacher they like

Friendship

Fantastic curriculum offer

Safe space and sense of belonging

Being understood in the right environment

Friends and social

Mfriends

What do you think makes young people attend and enjoy school?

Friends

Sports

people smiling at them

Relationships, Sense of
belonging, Engaging activities

To feel seen

A sense of belonging and being
valued

Hanging out with their mates, good
teachers that they enjoy spending
time with

Feeling school is a place they can
belong

Friends

What do you think makes young people attend and enjoy school?

Friendship groups

When it's interesting to them.

Support from teachers. Non judgemental

Having a friendship group.

Sense of belonging and being invested in.

Belonging

relationships

The law, friend groups

Feeling engaged and active

What do you think makes young people attend and enjoy school?

Key trusted adults

Kindness

peers and sport

feeling safe

Learning

Community

Friends

Opportunities to learn

FriendsSocial

What do you think makes young people attend and enjoy school?

Maths

To learn

Friendship fun laughter

Having right support and good friends

Friends

Good relationships peers and teachers

Friends

Relationships

Respect

What do you think makes young people attend and enjoy school?

Subject they like

Feeling of belonging

Safe space at school.

Opportunities

Feeling valued, welcome and supported. Teachers who understand.

Friends

Connecting with someone

Parental support

Community

What do you think makes young people attend and enjoy school?

Peer groups

Fun and joy

Interest in subjects.

Cos they have to

Positive relationships
Engagement
in lessons

Support

Friendship

Feeling safe

Being good at subjects

What do you think makes young people attend and enjoy school?

Fun interesting

relationships

Feeling that the can achieve

Feeling valued

Laughter

Social life

Friends

A space to be recognised and celebrated in the right way

Valued

What do you think makes young people attend and enjoy school?

Safe place

Enjoying learning

Engaging in something they as
purposeful and relevant

Modern buildings and equipment

Because home life is hard

Kind teachers

Because the have to

Strong relationships

Feeling safe

What do you think makes young people attend and enjoy school?

Great lessons

Nice teachers

Being safe

Teachers that make lessons fun and interesting

Given Responsibility

Enrichment

A chance to achieve

Be themselves

Friends Told too Safe place

What do you think makes young people attend and enjoy school?

Friends, boyfriends

Want to get on in life

Safe space

Kind teachers
Good lunches
Friends
Sports
Interesting teachers

Knowing where to go

Parents make them

Pot Noodles

Meeting place

Get away from Home

What do you think makes young people attend and enjoy school?

Feeling they have a voice

Encouraged by parents

Creativity

Meeting friends, being part of a class/group/community, chance to learn

Learning and development

Feeling valued
Friends
Learning
Law

Play time

Knowing teachers will keep them safe

If the school meets need. If their needs are understood. If the school is progressive and supported.

Reasons for Persistent Absence

Child-led

- Anxiety and depression
- Socially isolated - not making friends
- Separation anxiety
- Bullying and perceived bullying
- Caring responsibilities
- Conduct disorders
- Learning difficulties
- Medical reasons
- Peer pressure
- Teenage pregnancy
- Fear of academic failure, avoiding tests

Parental reasons

- Relationship with education and school
- Mental health
- Ill health
- Chaotic home environments
- Family finances
- Homelessness
- Needing child-care

Reasons for Persistent Absence

School-based

- Boredom with lessons
- Problem with/dislike of teacher/s
- Complexity of school environment
- Inconsistency of policy implementation
- Low staff morale
- Unclear expectations of pupils
- Over-rigid management
- Poor staff:pupil relationships
- Noisy and unpredictable environment
- Unsafe or not secure for pupils

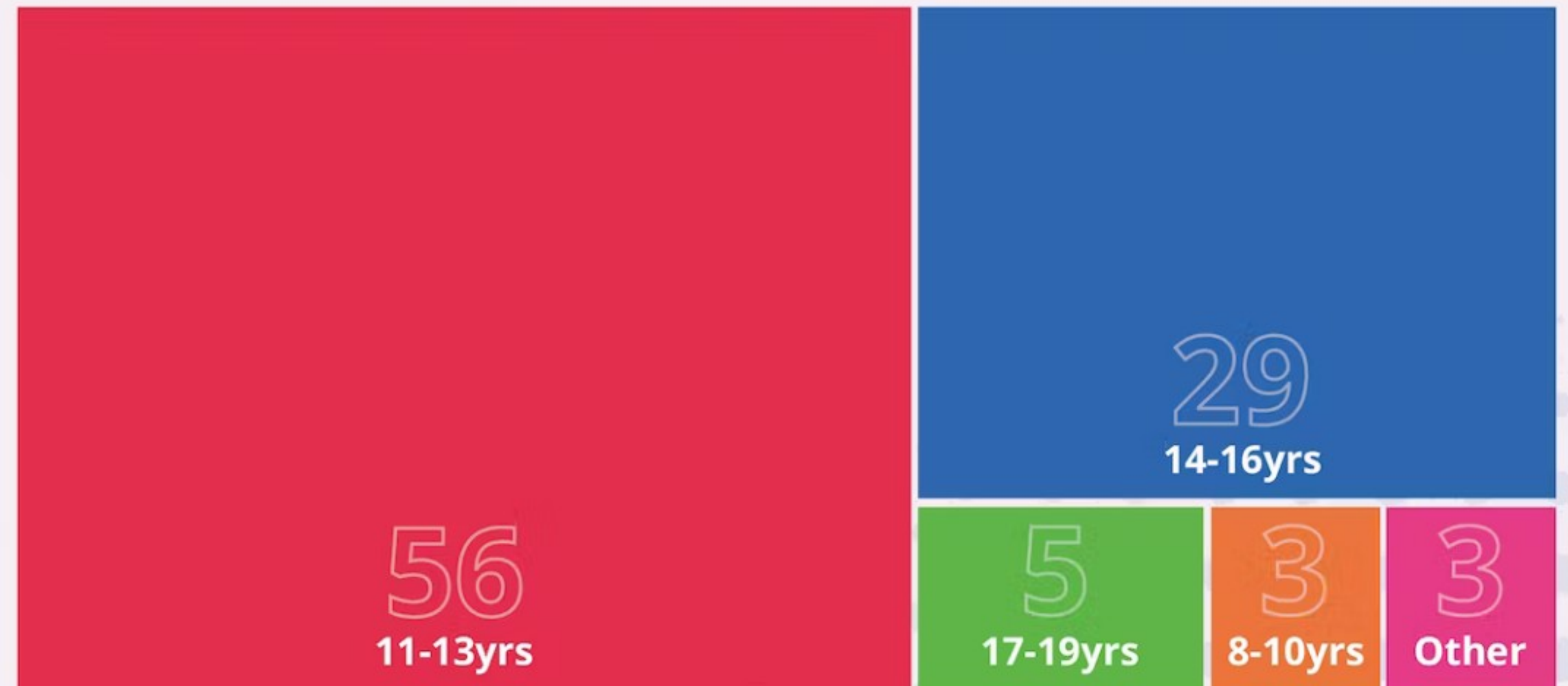
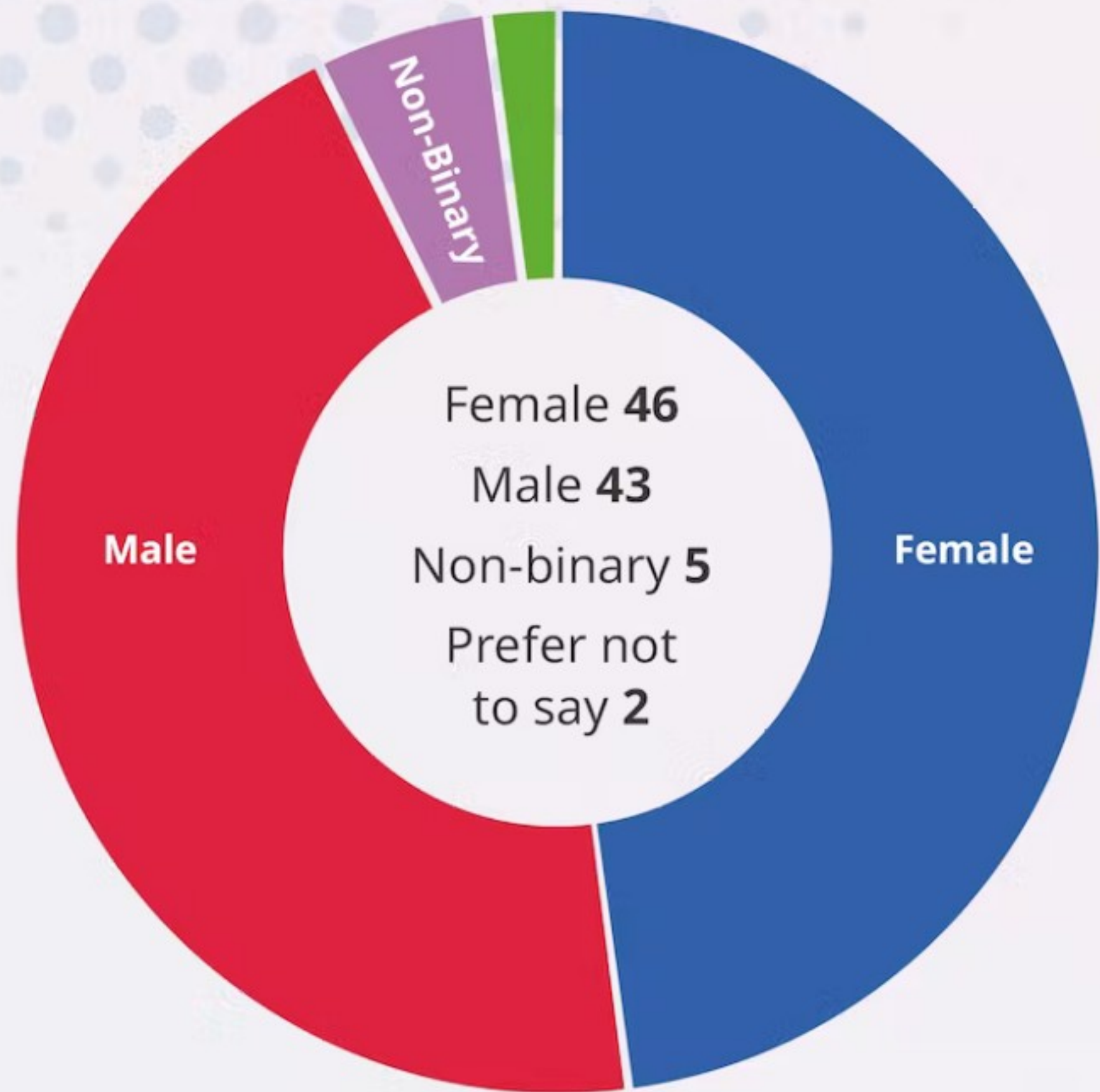
Social reasons

- Bullying
- Peer pressure
- Social isolation
- Culture where people are not valued or respected

**What makes you
want to go to school?**

Survey results

Survey Demographics



What is your current attendance?

Attendance
less than 90%

17%

32%
Attendance
at 95% or above

What causes your low attendance?

8 I have anxiety and low mental wellbeing

8 I have a medical condition

7 I feel I can't do some of the work

6 I don't like some of the teachers

6 I find it difficult to behave the way the school wants me to behave

6 I don't like the lessons

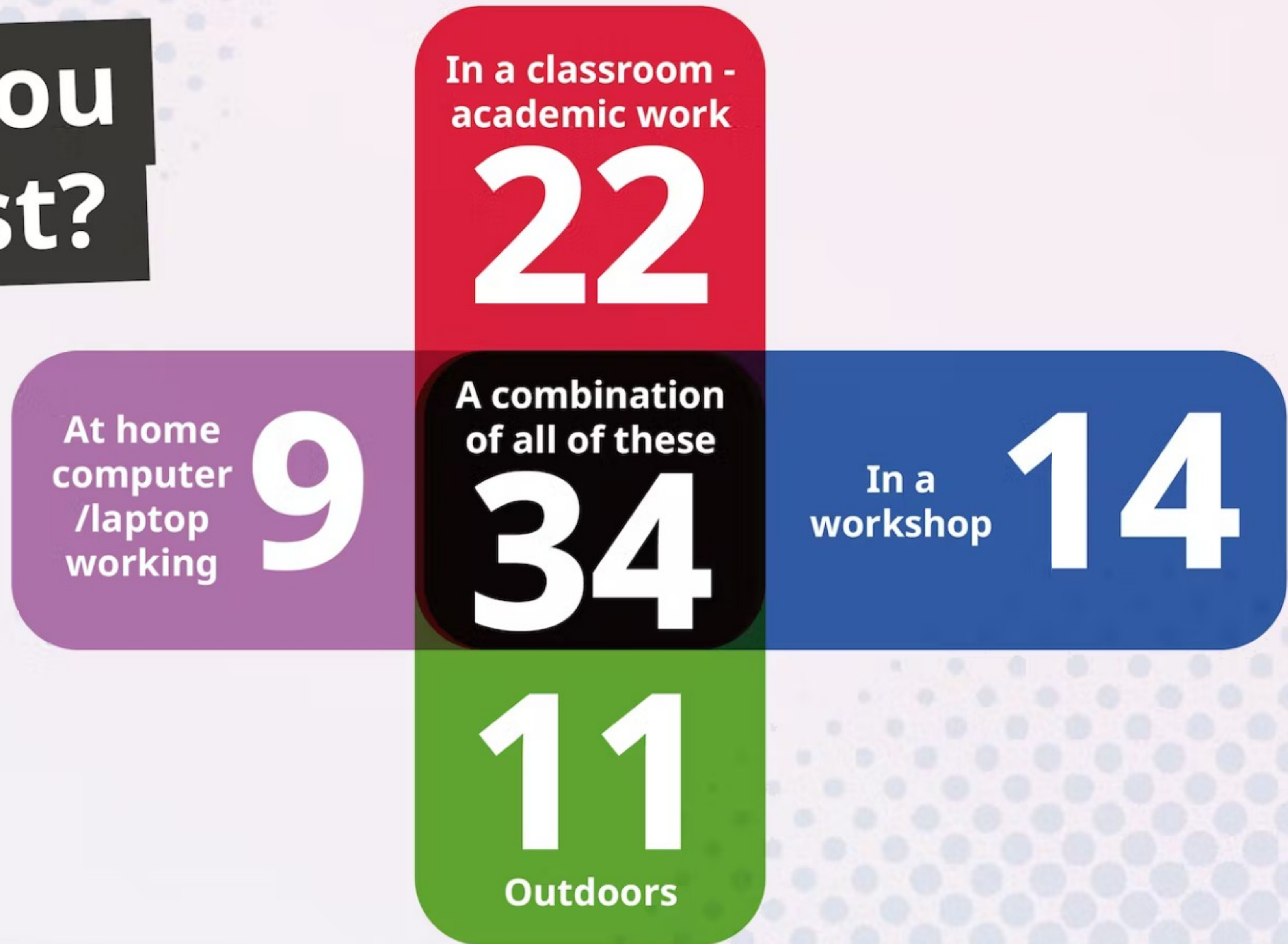
5 I don't like the school environment

5 I don't think the school are fair or respectful to students

When you wake up on a school day how do you feel?



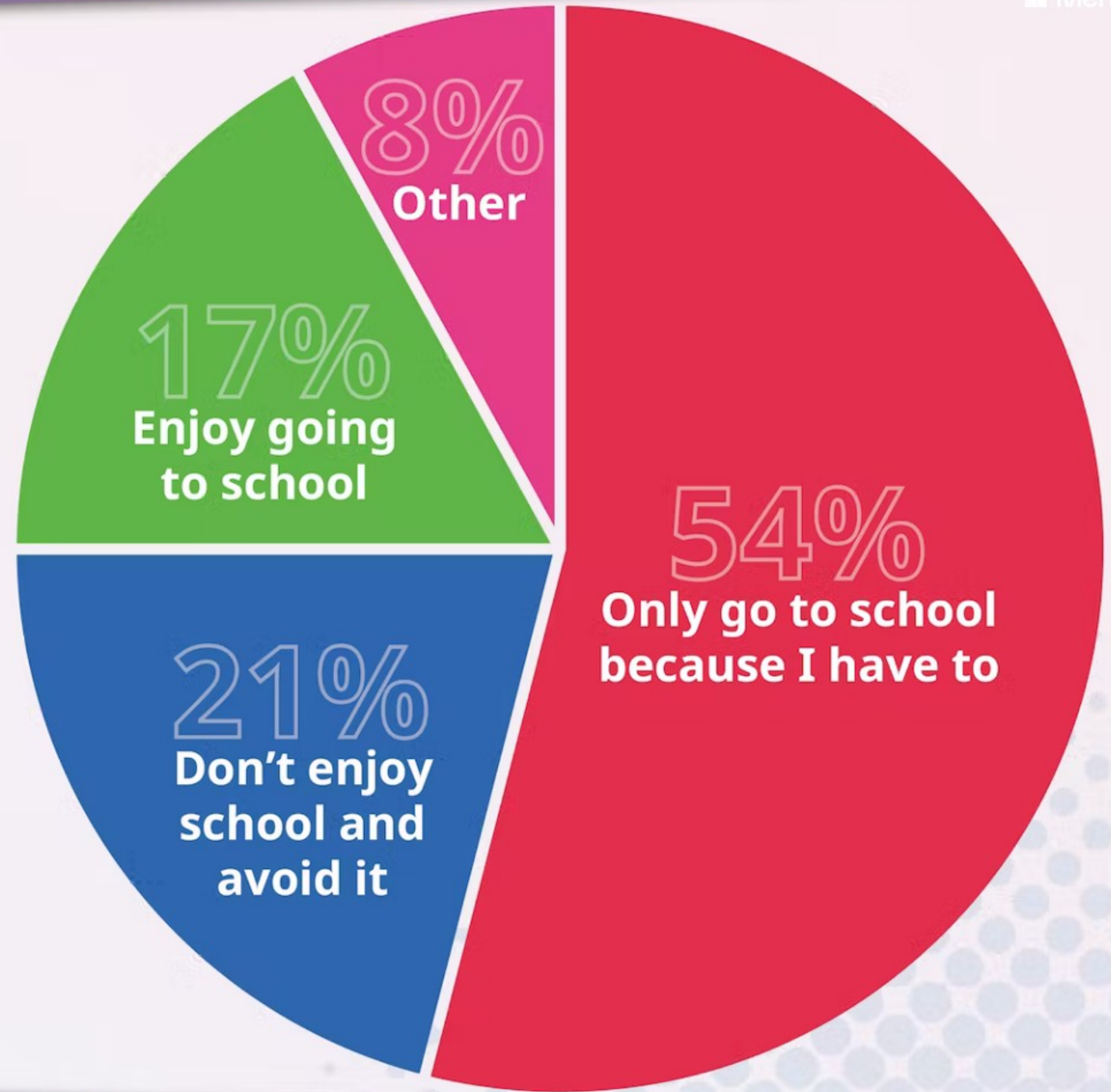
How do you learn best?



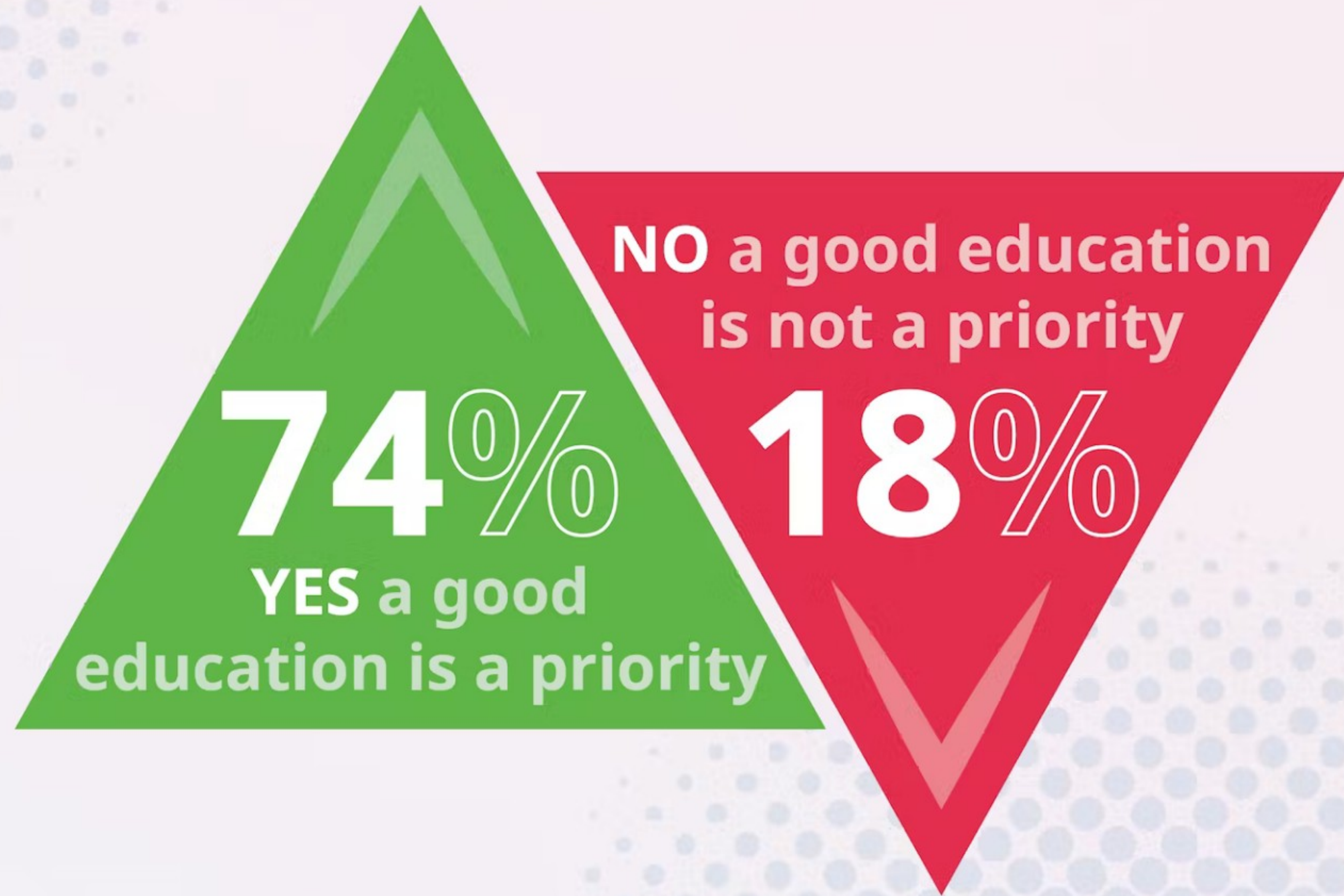
Are there any barriers that stop you from enjoying or attending school?

People closer School building
phones until after school
School is unfair
People in school **Teacher** Teacher is rude
Bullied **People** School
English teacher
Areas of the school Judgmental people
Friends Scared of people
Subjects or teachers Rules at our school

What is your attitude about school?



**Is getting
a good
education
a priority
for you?**



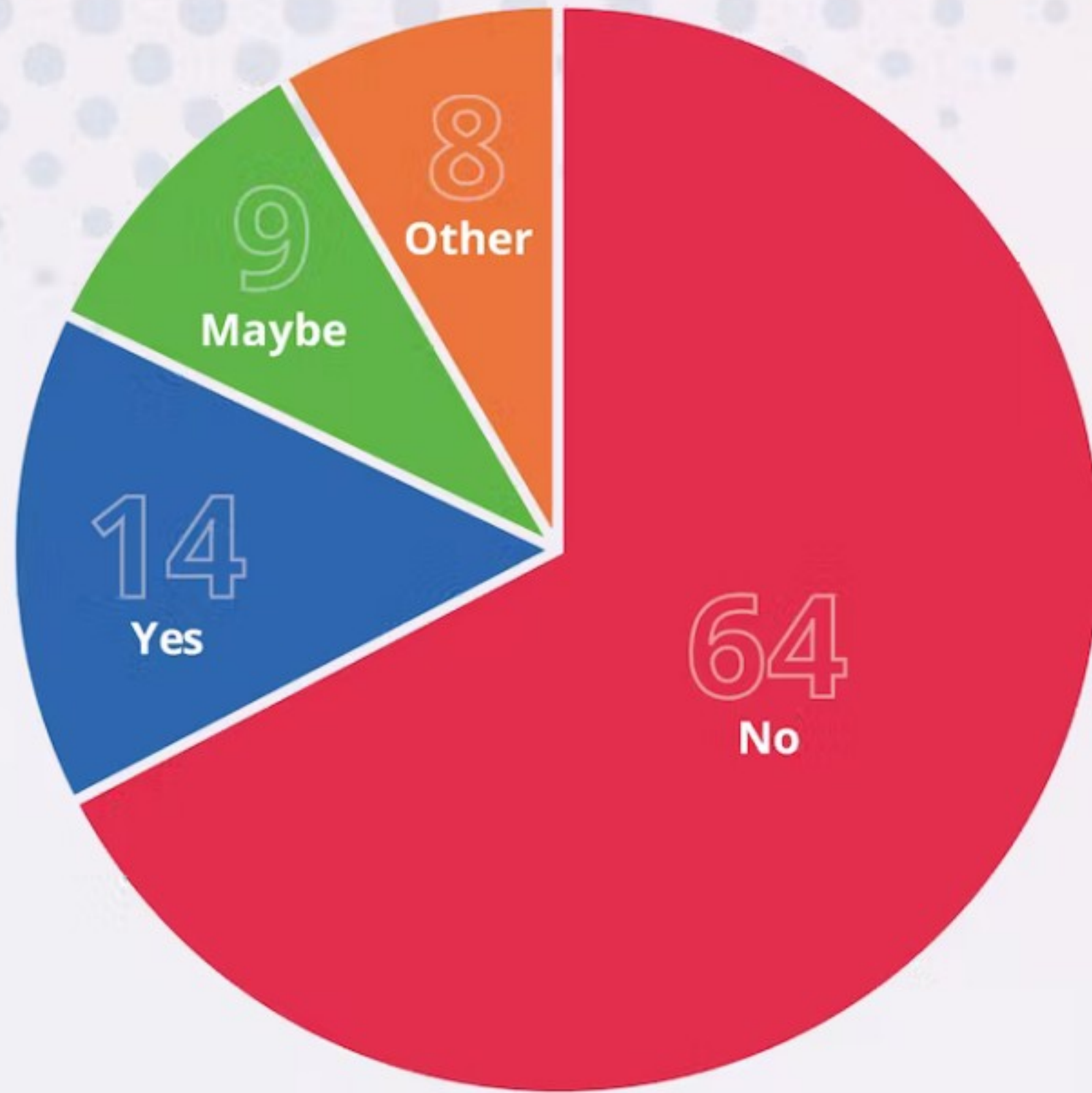
**Is getting
a good
education
a priority
for your
school?**



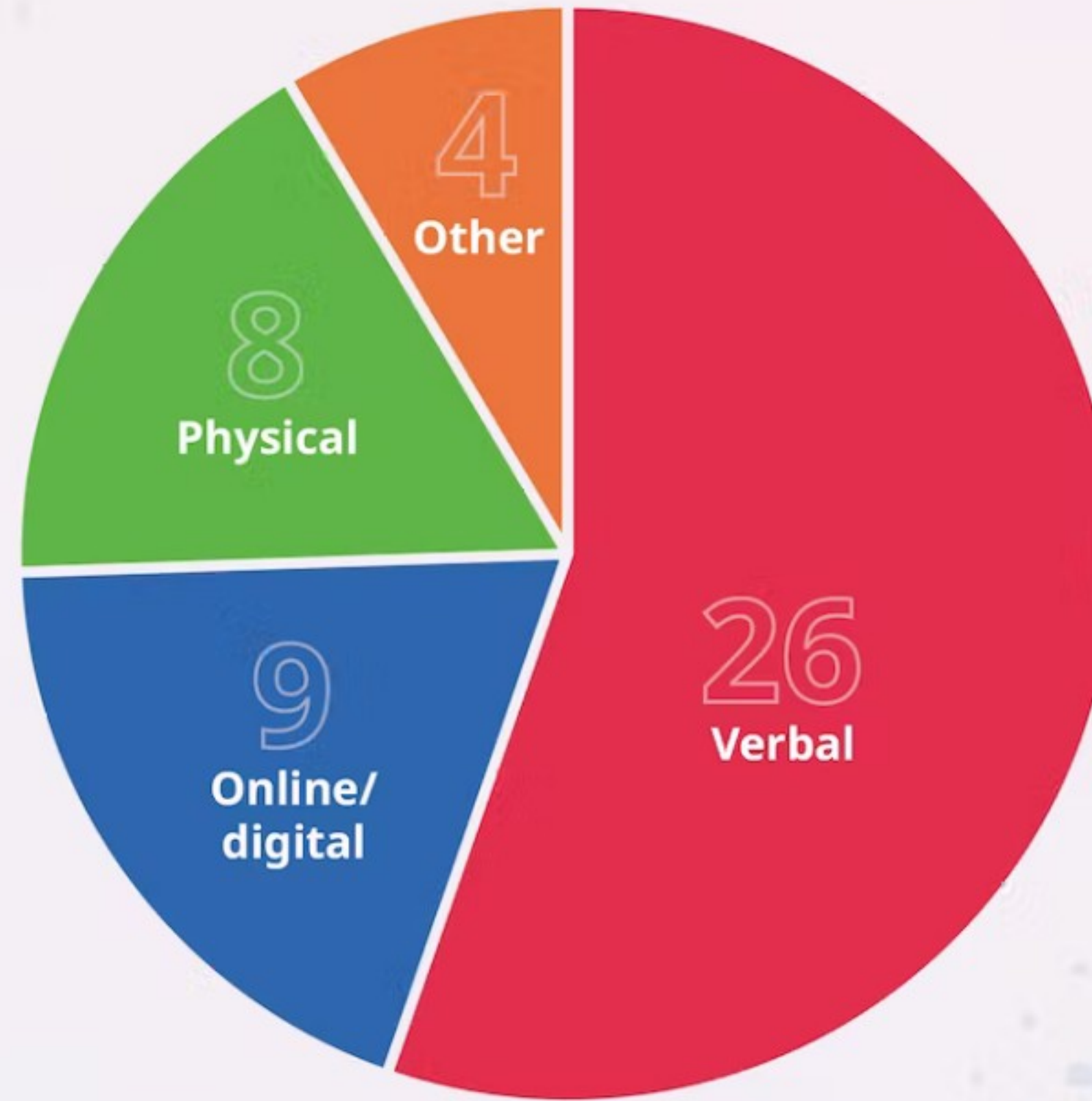
**NO I don't think my
school wants me to
achieve my best**

8%

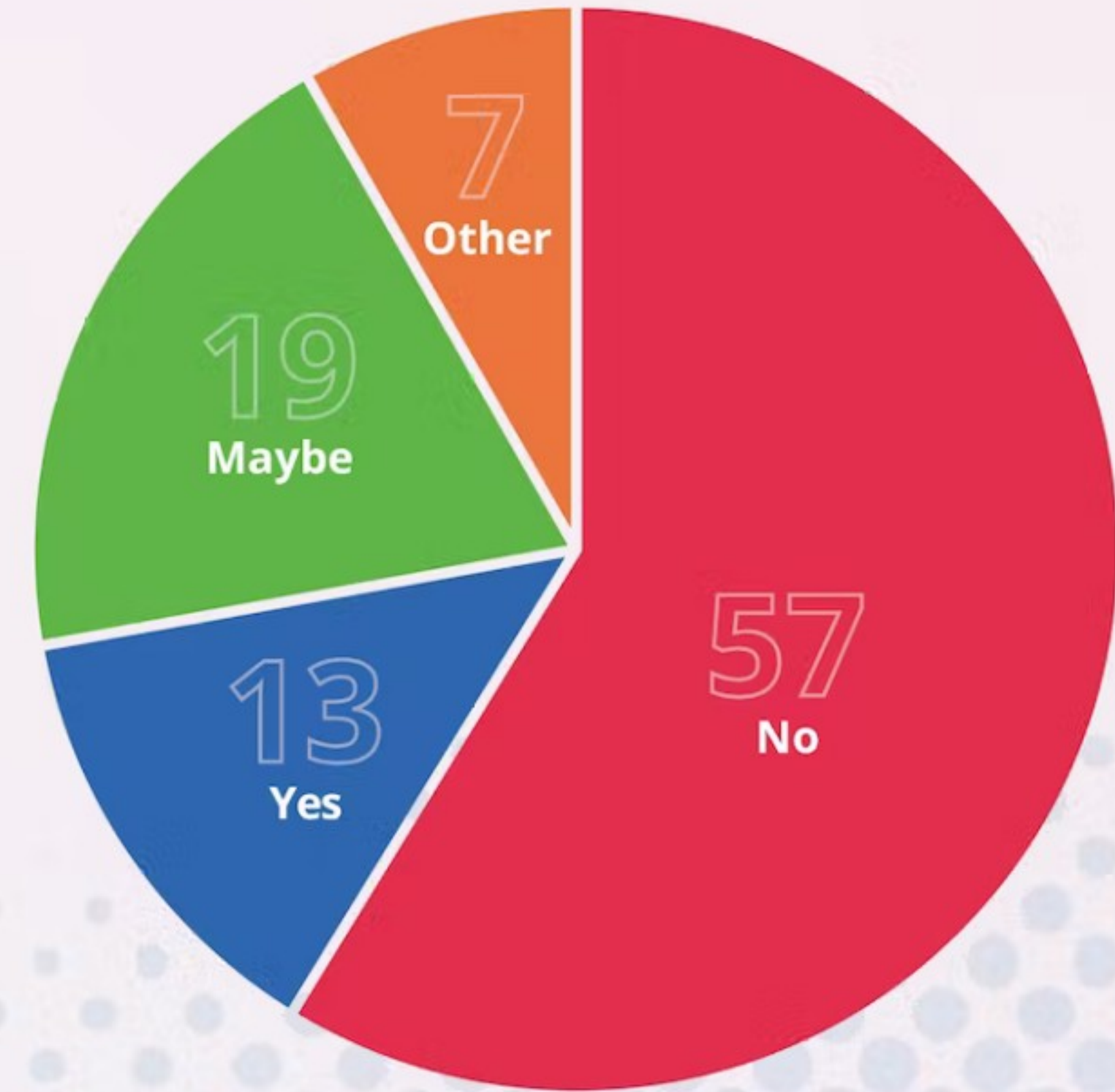
Bullying



Are you being bullied?



What type of bullying do you/have you experienced?



Are your friends being bullied at school?

**The Youth Forum
asks “How will these
results support school
improvement?”**

Discussion

The Youth Forum asks “How will these results support school improvement?”

Talk to school

Helps us understand your experiences and expectations

Will listen to you more in the future

Increased pupil voice

More pupil voice opportunities

Review our culture

They should signal to schools where the priorities are

Ask same questions at school and act on results.

Opportunity to look at how school can support differently

The Youth Forum asks “How will these results support school improvement?”

Help schools to understand children/young peoples perspectives

Feed back to all Heads and Chairs

Listen

We will act on these results

We'll make your lessons more interesting

Hoping they do. If a school meets a child's needs then a child might enjoy going

It's really important that the views of YP are heard by professionals - we need to act on them.

we need to look at the things that make you want to go to school and do more of it

Be listened too

The Youth Forum asks “How will these results support school improvement?”

Be curious

Hopefully raise the profile of CYP voices

Prioritise pupil voice

Assemblies on respectful language

Look at bullying policy.

Understand kids better

Educate the teachers on vital importance of positive relationships

I think these results will support school improvement. You have told us and we need to listen to you as you tell us honestly how to improve. Thank you for your hard work

It will help us to think about different types of questions to ask children in the future based on these experiences.

The Youth Forum asks “How will these results support school improvement?”

awareness of barriers -open ended questions linked

To improve communications

More opportunities to hear your voices.

Communicate the desire for you to succeed

Need to hear the voice of the young people with our setting

Increased knowledge in schools of pupil views

Helps schools understand what young people need and how they can be better supported

Helps us understand how we can advocate for you. We need to ask more questions with you.

Help engagement

The Youth Forum asks “How will these results support school improvement?”

Be curious about young people and importance of relationships

Be supportive of a brave approach to curriculum

All pupils need support understand and manage anxiety

Pupil panels

They don't include the views of the unseen children / young people who are on the fringes of the community.

Review our culture

Pupil voice in school increased

Hopefully teachers/staff will listen to students more. Will work with students to improve their school environment.

Learn from the feedback

The Youth Forum asks “How will these results support school improvement?”

Should show schools that they need to build relationships and understand what is really happening for young people

I will share these views with senior colleagues to make sure we take account in our policy development

They can help us understand better the concerns and perceptions of children and young people, and we can then use that understanding to help school fit their needs better.

Show you our desire for you to succeed

Inspire me to support inclusion in schools

More time for students to talk about feelings

influence the writing of our relationship policy (replacing the behaviour policy)

There to be realism about the issues

Need to speak to children who are less likely to get involved in youth clubs / groups / Youth Forum etc.

The Youth Forum asks “How will these results support school improvement?”

Change what they receive

Challenge the range of curriculum and how this links with how get to your aspirations/ job life choices

Talk to our students, about the compulsory nature of 11-16 education

Ask you what a 'successful' education would look like for you?

Schools need to be more aware of the issues raised, I think that inclusion awareness across the county will go some way towards this. Listen to your students and show them what's been learned and the actions taken.

Make time to hear you and work together to change the outcomes

How do peers learn / demonstrate respect each other needs

Explicit sharing of pupils staff and families and community reasons for education

For more information and School Assembly Support on:
participationmailbox@somerset.gov.uk

For young people thinking about joining a Youth Voice Group visit:
www.somerset.gov.uk/youthvoice

We're on social media too! Find us on:

 **@SomerYouthVoice**

 **@somerseyouthvoice**

 **@SomersetYouthVoice**